



SWING DOOR
WIDE STILE

SERIES 22

DESCRIPTION

EXTRUSION SIZES:

- 44.5mm (1 3/4") thickness
- 117.5mm (4 5/8") stiles
- 98.4mm (3 7/8") top rail
- 149.2mm (5 7/8") bottom rail

OPTIONAL HEADERS:

- 57.2mm (2 1/4")
- 149.2mm (5 7/8")

OPTIONAL DIVISION RAILS:

- 44.5mm (1 3/4")
- 149.2mm (5 7/8")
- 214.3mm (8 7/16")
- 266.7mm (10 1/2")
- 309.6mm (12 3/16")

OPTIONAL BASES:

- 98.4mm (3 7/8")
- 209.6mm (8 1/4")
- 261.9mm (10 5/16")
- 304.8mm (12")

ALUMINUM:

6063-T5 alloy and temper

ANODIZED:

- Clear anodized
- Champagne anodized
- Light bronze anodized
- Architectural bronze anodized
- Black anodized

ARCHITECTURAL COATING:

P.P.G. duracron, duranar and duranar XL paint

GLASS STOPS:

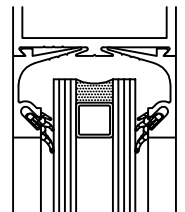
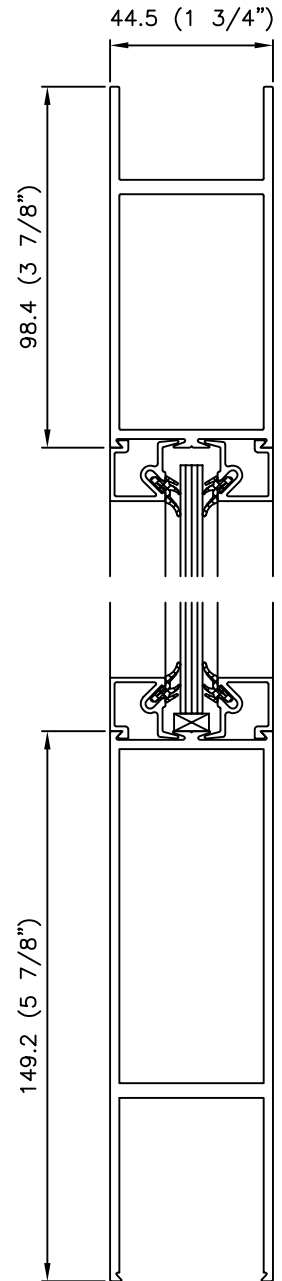
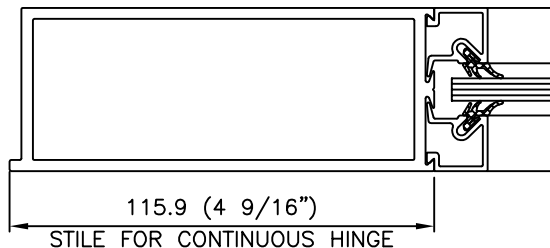
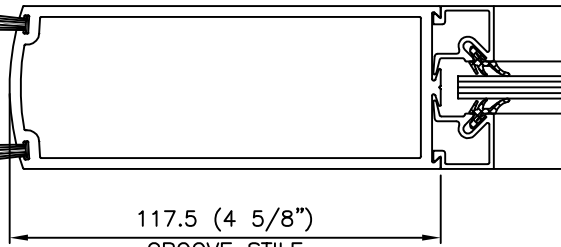
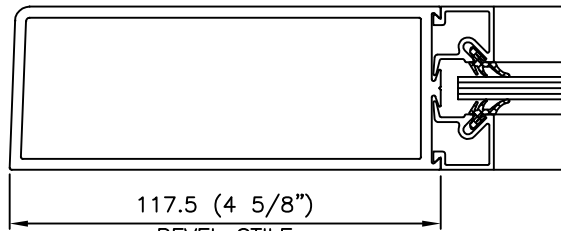
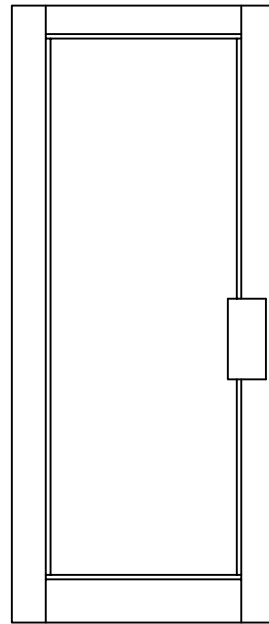
- No. 201 - single
- No. 202 - thermo

GLAZING VINYL:

Dry glazing retained by the snap on glass stops

WEATHERSTRIPPING:

Meeting rail features dual fin seal polypropylene woven pile seals. This provides a continuous seal on both the interior and exterior sides of the M.S. lock cut out.



SEALED UNIT GLAZING



DESCRIPTION

EXTRUSION SIZES:

- 50.8mm (2") thickness (1 3/4" door
- + 1/4" insulclad)
- 117.5mm (4 5/8") stiles
- 98.4mm (3 7/8") top rail
- 149.2mm (5 7/8") bottom rail

OPTIONAL HEADERS:

- 57.2mm (2 1/4")
- 149.2mm (5 7/8")

OPTIONAL DIVISION RAILS:

- 44.5mm (1 3/4")
- 149.2mm (5 7/8")
- 214.3mm (8 7/16")
- 266.7mm (10 1/2")
- 309.6mm (12 3/16")

OPTIONAL BASES:

- 98.4mm (3 7/8")
- 209.6mm (8 1/4")
- 261.9mm (10 5/16")
- 304.8mm (12")

ALUMINUM:

- 6063-T5 alloy and temper

ANODIZED:

- Clear anodized
- Champagne anodized
- Light bronze anodized
- Architectural bronze anodized
- Black anodized

ARCHITECTURAL COATING:

- P.P.G. duracron, duranar and duranar XL paint

GLASS STOPS:

- No. 202 - thermo

GLAZING VINYL:

- Dry glazing retained by the snap on glass stops

WEATHERSTRIPPING:

- Meeting rail features dual fin seal polypropylene woven pile seals. This provides a continuous seal on both the interior and exterior sides of the M.S. lock cut out.

INSUL-CLADDING:

- Continuous rigid PVC thermal break mechanically fastened to the door rails and stiles. Heavy gauge aluminum cladding interlocked to PVC on interior face of door.

